



ENGINEERING GROUP

Apex

Pressure Sensitive Labeling System





Apex

Pressure Sensitive Labeling System



Is the K2 Apex pressure sensitive labeler the right machine for your packaging requirements?

The K2 Apex is a fully integrated pressure sensitive labeling system that precisely controls and orientates the container, labels it and inspects it. The labeler is capable of running multiple diameter and/or shaped containers up to 1000 cpm.

Understanding Pressure Sensitive Labeling

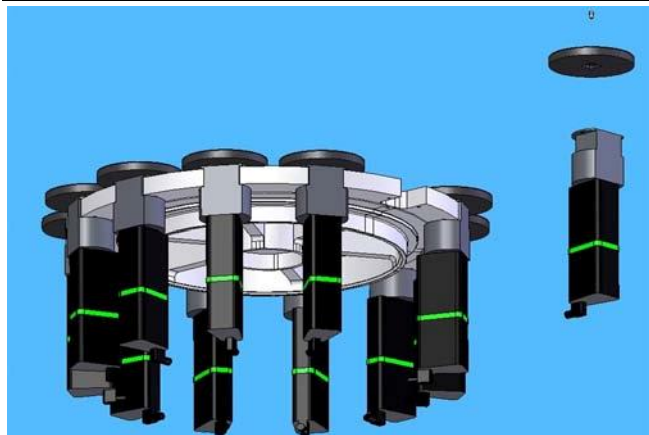
The K2 Apex can label round, square, rectangular and triangular shaped containers all with a single machine. Multiple label types for rainbow packaging can also be configured within the same machine.

Pressure Sensitive Labeling

K2 Engineering has developed the technology that allows for unprecedented container control, previously impossible to achieve with mechanical cam designs and fixed pulley drive systems.



Servo Driven Bottles Plates



Servo Technologies

The K2 Apex labeling system utilizes the advancements in proven servo technologies along with an operator friendly HMI access and extremely precise positioning and control of label placement on the container.

Self Adhesive Applicator Heads

The K2 Apex utilizes the Herma H400 Unwind Station to accurately deliver the label to the container.

Label Delivery

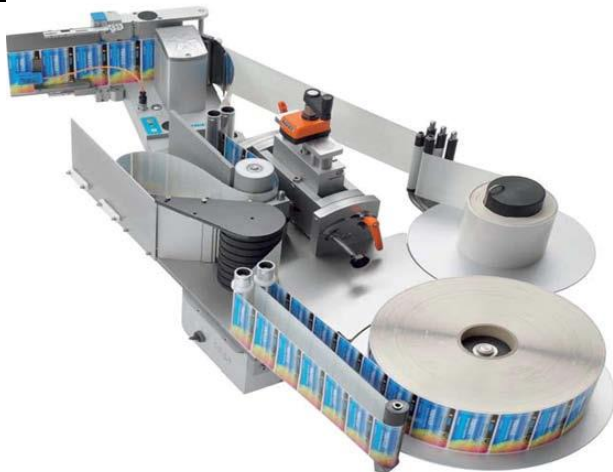
K2 Engineering understands the continued need to reduce both direct and indirect costs as a component of lean manufacturing. Our customers have documented in excess of label 99.97% placement accuracy.

Pressure Sensitive Label Application

K2's Apex machine provides a positive container positioning system that has no compromises in position that can result in inaccurate label application blisters or bubbles.



Herma Head H400



Herma Head Specifications

The Apex machine utilizes the H400 unwind station to label several types of containers. It also has the capability to place multiple labels on a single container.

Integration Options

K2 Engineering offers our customers the ability to utilize a multitude of integration options from a single sensor which detects the presence of a label to vision and OCR recognition combined with bar code scanning and verification. We put a great deal of emphasis on open integrations, open interoperable control and automation platforms for our end users.

Apex Featuring Integration Options

All inspection and coding options are ethernet capable of sending and receiving over an industrial ethernet network.



Inspection Systems

- Label Presence
- Skewed Label
- Label Height
- Bar Code Verification
- 2D Bar Code Verification
- OCR Recognition
- Date Code Verification
- Cap Color Inspection

Rejection Systems

- Pusher Rejection
- Lane Division
- Flex Rail Rejection

Coding Options

- Ink Jet Coding
- Laser Coding



Engineering Technologies

By utilizing a single open ended ethernet communications system and the removal of all black box technologies, handling package changeovers is a simple product/recipe selection at the machine HMI as well as all other system functions. There is no need to learn proprietary software platforms and no language barriers.

RCO (Rapid Change Over)

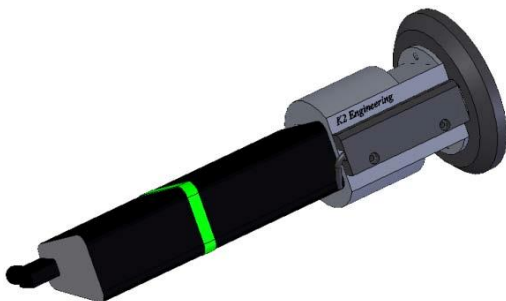
Change your recipes right on the HMI touch screen within seconds.



HMI Functions

- Cam Profiles
- Inspection Rejection
- Container Selection
- EOP (Every Other Pitch) Operations
- Peak Torque Limits
- Bar Codes – SKU's
- Vision Parameters
- PS Head Parameters

Servo Cartridge Assembly



3D Engineering Technologies

K2 utilizes only the latest in 3D engineering technologies that allow for reliable modeling prior to manufacturing. Focusing on the load bearing and high stress components during the engineering and design phase provides for maximum dependability and reliability.

Specifications, Features, Options and Support

At K2 Engineering Group our professionals have helped bring leading packaging companies to where they are today with our extensive knowledge in the industry since 1972. We take a great deal of pride in our ability to provide the latest, most innovative technology for our customers. We continue to develop labeling and packaging technology to meet the needs of the packaging industry for today and the future.

Technical Data

Machine Specifications

Speed Range: 150 – 1000 cpm
Container Sizes: 50 – 125mm Diameter
Larger Containers upon Request

Service and Engineering Support

- Complete Packaging Line Engineering/Design
- “Turn Key” System Supply
- Specification Packages
- On-Site Service and Support
- Line Installation

Machine Configurations

720mm Platform – 12, 18, 21, 24 Station
960mm Platform – 16, 24, 28, 32 Station
1240mm Platform – 20, 30, 35, 40 Station
1800mm Platform – 28, 42, 56 Station

Optional Configurations

- Combination Labeling
Combination Labeling Types:
- Hot Glue Cut & Stack & PS
- Roll-fed & PS
- Cold Glue Cut & Stack & PS

Features

- Elau Servo Technology
- AB Powerflex Drives
- AB Control Logix PLC
- 10” Color HMI
- Ethernet IP Communications
- Automatic Speed Control
- Recipe Based Product Selection
- Drive Parameters – HMI
- Polycarbonate Safety Doors
- Servo Controlled Electronic Cams
- Servo Driven Infeed Worm
- Servo Driven Star Wheels
- Electrical Safety Interlocks
- Nema 4 Main Panel

Options

- HMI Based Inspection Rejection
- Lane Division
- Bar Code Verification
- Integrated Vision Systems
- Automatic Lube Systems
- Container Orientation
- NEMA 4X Main Panels
- Corrosion Package
- UL Approvals

Take a look at our other labeling equipment which is sure to meet all of your packaging needs...

Summit – Full Wrap Cut and Stack



Everest – Roll-fed



Non-Contact Adhesive System



Change Parts



Contacts

Ed Stefaniak – Managing Director
P. 262-662-3452

Email: eds@k2egroup.com

Erik With – Director/Systems & Sales
P. 262-662-3452

Email: hew@k2egroup.com

Bryan Goetzke – Operations Manager
P. 262-662-3452

Email: bryan@k2egroup.com

Randy Schallock – Service Engineering Manager
P. 262-662-3452

Email: randy.schallock@k2egroup.com